

Status Recorder with 5 input keys   

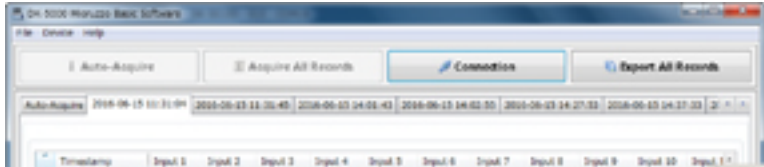
DK-5005D

10 inputs type

DK-5010D

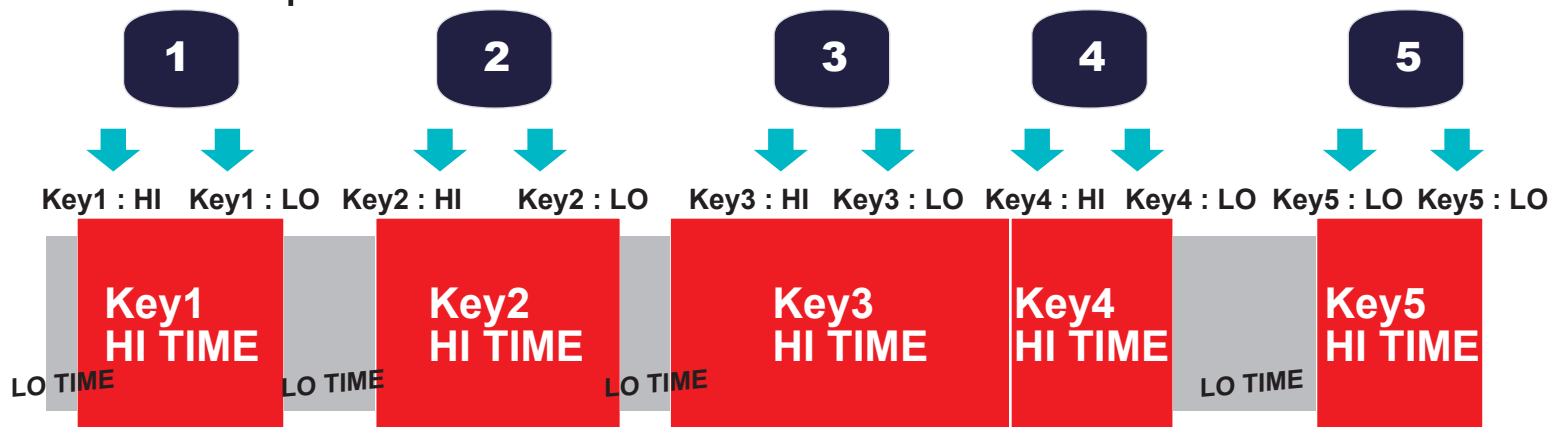
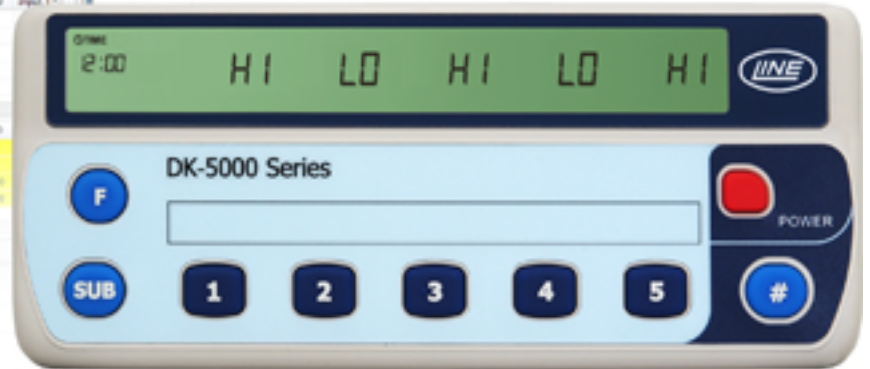
30 inputs type

DK-5030D



The input status is toggled to HI or LO and recorded with timestamp whenever pressing input keys.

HI and LO time of each input key is able to be summed up.



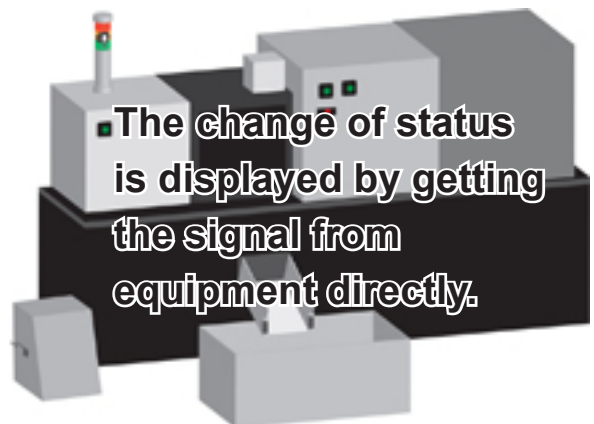
Example.1 The working time of each working process is measured.

Example.2 Each reason for stopping the equipment is recorded with timestamp.

DK-5000 Sensor input device for DK-5000 series

M16-600

It is able to input into DK-5005D from external sensors on behalf of the input keys.



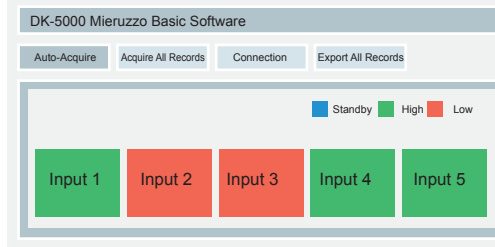
The change of status is displayed by getting the signal from equipment directly.

SOFTWARE

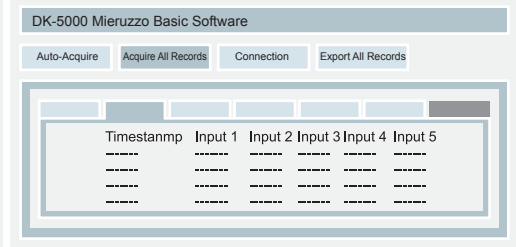
The companion software enables the user to use the following functions when the device is connected to the computer with a general-purpose USB cable.

- Real-time display of current status displayed on the device
- Download the data from the device
- Export the downloaded data to a .XLS or .CSV file

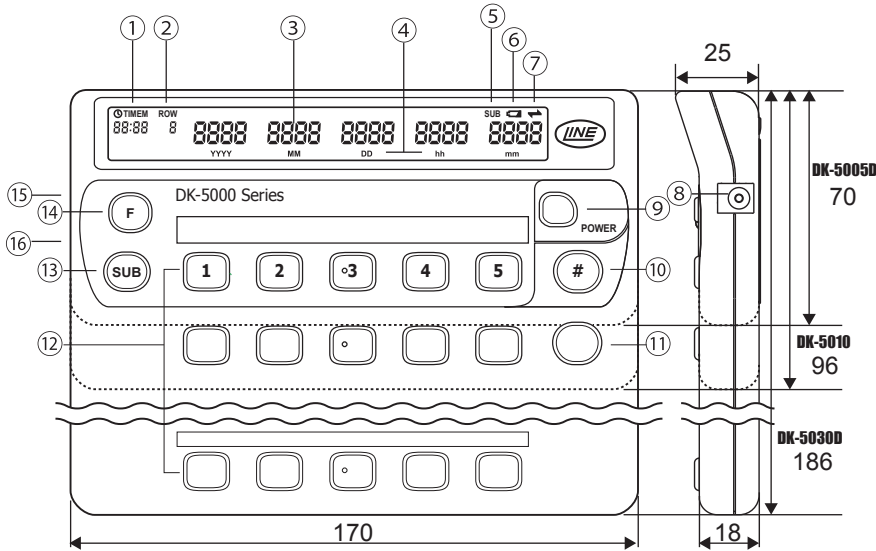
Display of current status



Download the data from the device



DIMENSIONS : DK-5000D(mm)



- ① Clock / Memory No. Display
- ② Row Display*
- ③ Input Display
- ④ Date/Time Icon
- ⑤ Subtract Icon
- ⑥ Battery Warning Icon
- ⑦ Software Link Icon
- ⑧ DC Jack
- ⑨ Power Key
- ⑩ [#] Key
- ⑪ Row Key*
- ⑫ Input Keys**
- ⑬ Subtract Key
- ⑭ Function Key
- ⑮ USB 2.0 Port
- ⑯ Strap Hole***

*DK-5010D
DK-5030D Only

**DK-5005D x 5
DK-5010D x 10
DK-5030D x 30

***DK-5005D Only

SPECIFICATIONS

Model	M16-600
Input Mode	Contact / Open-Collector Input
Input	Non-contact Input: Open Collector (Sink Current approx. 1.5mA) L: <1.4V Contact Input: Relay, Microswitch, others (Sink Current approx. 1.5mA)
Input Speed	Count Input: 10Hz (Duty 1:1) State Input: 1sec min. pulse width ¹
Sensor Power Supply	For External Sensor: DC12V (100mA)
Sensor Input Terminal	Terminal Screw
Power Source	AC/DC Power Adapter for DK-5000
DK-5000 Connection	USB 2.0 (USB Micro-B)
Operating Humidity	35 ~ 85% RH (Non-condensing)
Operating Temperature	0 ~ 50°C (Non-freezing)
Storage Temperature	-10 ~ 60°C (Non-freezing)
Weight	150 (L) x 100 (W) x 32 (H) mm / approx. 240g
Accessories	Instruction Manual x 1, USB On-the-Go (OTG) Host Cable x 1, Micro B-to-A USB Cable x 1, AC/DC Power Adapter x 1
Compliance	CE, RoHS

Note 1: Applicable for DK-5000 Type D application only.

Models	DK-5005D	DK-5010D	DK-5030D
Recording operation	Key inputs in recording mode		
Setting	Unnecessary		
Windows PC for viewing data	Essential		
Maximum number of key inputs	48,000 inputs	27,750 inputs	10,000 inputs
Input Type	Rubber Key (DK-5005D x 5 / DK-5010D x 10 / DK-5030D x 30)		
Display Type	7-Segment LCD Display Status(x5) : 7mm(H), Record Number / Time Display : 3.5mm(H)		
Input Display	Display: 5-30 Input Status (Hi or LO)		
Clock Function	Year / Month / Day / Hour(24hour) / Minute / Second		
Memory	Built-in flash memory		
Data Communication	USB micro-B (USB 2.0)		
Power Source	AAA Battery x 4 pcs. USB Cable AC/DC Adapter		
Battery Life	200 hour min. *		
Operating (Storage)Temperature	0°C - 50°C (-10°C - +60°C) non-freezing		
Weight (battery not included)	Approx. 130g	Approx. 185g	Approx. 340g

* under normal operating temperature using Alkaline type battery

Accessories
Instruction Manual
* Batteries are not included. Please prepare AAA batteries by yourself.
Data Communication Software
CPU : Pentium2 266MHz OS : Windows7,8,8.1,10 Disk Application: 50MB Space Java Runtime Environment: 160MB Memory : 1GB Downloadable from http://www.line-seiki.com
Options
USB-02 (USB Cable)
* A general-purpose micro B-to-A USB cable can be used.
AC/DC ADAPTER (DK-5)
* Please use Line Seiki AC/DC Power Adapter.

This catalog was last revised Jan, 31, 2017.
Contents are subject to change even without prior notice.
All Rights Reserved, Copyright © 2017, LINE SEIKI CO., LTD.



LINE SEIKI CO., LTD.

Head Office 37-7 Chuo-cho, 2-Chome Meguro-ku,
Tokyo JAPAN 152-0001
Contact TEL:03-3716-5151 FAX:03-3710-4552
E-mail webrade@line.co.jp
URL <http://www.line-seiki.com>