

G90/G95 Series

Large LED Counters/Displays

【Large Electric Counter / Display G90】



【Large Electric Counter / Display G95】



Visualize production progress in each production area and workcell.



Visualize production progress throughout your factory and production lines.



Digit Size (Actual Size)

【G90】

【G95】



【Features】

- **Digit Size**
2 sizes are available.
- **Mounting methods**
Both hanging brackets and base-mounting brackets are included to all models.
- **Function**
Counter/Display are selectable in G90-303 and G95-303.



LINE SEIKI

www.lineseiki.com

MODELS

Model	G90-301	G90-303	G95-301	G95-303
No. of Digits	6 (Digit Size : 56.8(H) mm x 32.4(W) mm)		6 (Digit Size : 101.6(H) mm x 60.0(W) mm)	
Free Write / Display (25-Pin D-Sub : BCD Input)	-	○	-	○
Weight	approx. 1.5kg		approx. 3kg	

ACCESSORIES

1. Hanging Bracket (Left) ...1
2. Hanging Bracket (Right) ...1
3. Base-mounting Bracket ...2
4. Allen Screw ...4
5. Spring Washer ...4
6. 25-Pin D-Sub (DB25)
Male Connector (G90 / 95-303 Only) ...1
7. Instruction Manual ...1

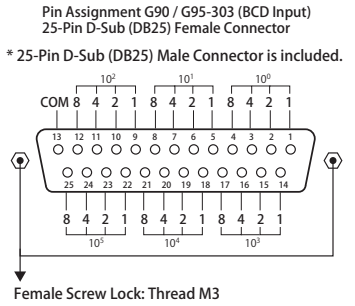
TERMINAL CONNECTIONS

No.	Connection	No.	Connection
1	GND	8	INH (Input Inhibit)
2	1kHz IN A (Non-contact Input)	9	RES (Reset)
3	1kHz IN B (Non-contact Input)	10	IN SEL (Input Selection)
4	+12V	11	+12V
5	20Hz IN A (Contact Input)	12	N.C (No Connection)
6	20Hz IN B (Contact Input)	13	Power
7	GND	14	(AC100-240V)

How to use BCD input

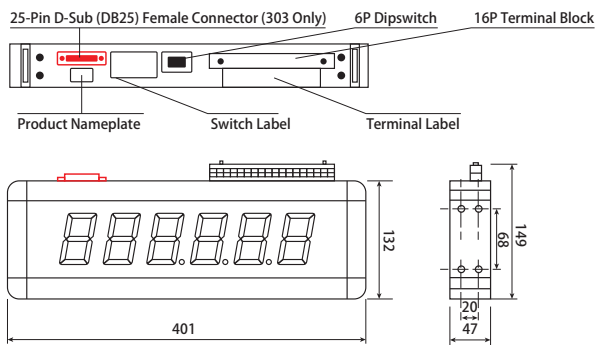
G90/95-303 as a totalizer with free-write function
 - DIP switch No.3 = OFF
 - When reset is done, value of the setting unit (model: PU-06-001) is shown on G90/95-303, instead of 0 (zero).

G90/95-303 as a large display
 - DIP switch No.3 = ON
 - Value on the setting unit (model: PU-06-001) is shown on G90/95-303.
 If you use a setting unit made by another company, please confirm its output specifications.

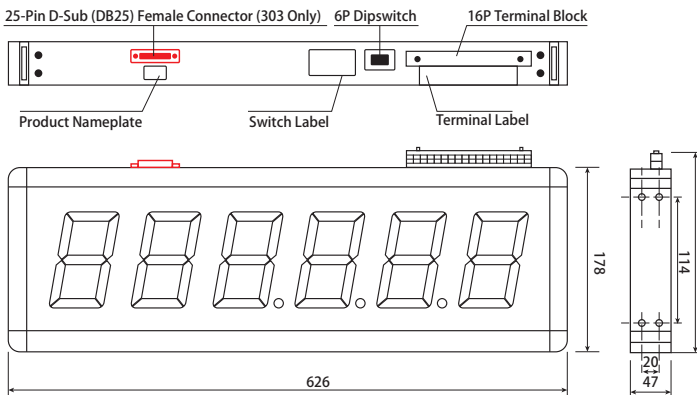


DIMENSIONS (mm)

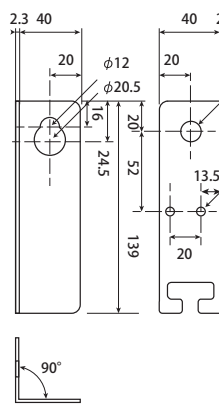
G90 Series



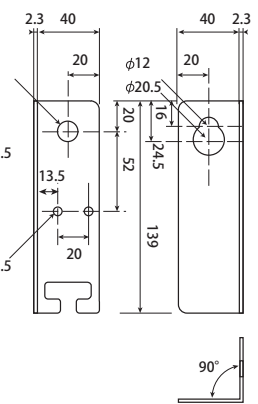
G95 Series



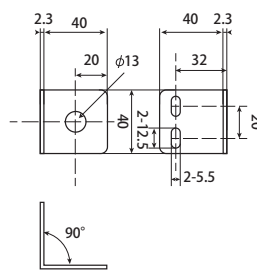
Hanging Bracket (Left)



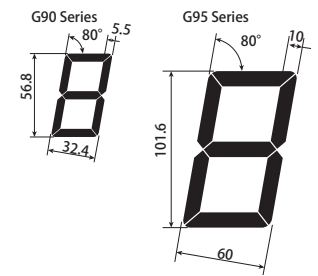
Hanging Bracket (Right)



Base-mounting Bracket

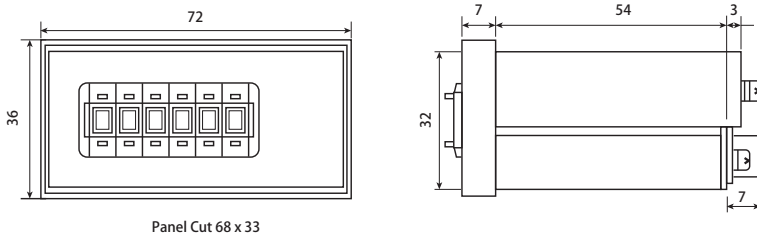


Digit Size



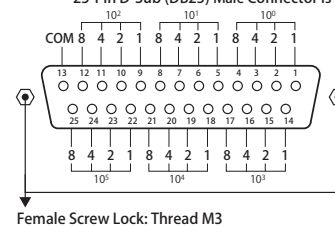
Setting Unit (Model: PU-06-001)

The value set on the digital switch of the setting unit will be shown on the large display (G90-303 or G95-303). The connector for wiring to the large display (G90-303 or G95-303) is included but the straight cable available in the market can be used.



Pin Assignment PU-06-001 (BCD Output)
 25-Pin D-Sub (DB25) Female Connector

* 25-Pin D-Sub (DB25) Male Connector is included.



LINE SEIKI CO.,LTD.

Address : 37-7, Chuo-Cho, 2-Chome, Meguro-ku
 Tokyo 152-0001 JAPAN

Contacts : Tel: +81-3-3716-5151 Fax: +81-3-3710-4552

E-mail: webtrade@line.co.jp

URL : <http://www.lineseiki.com>